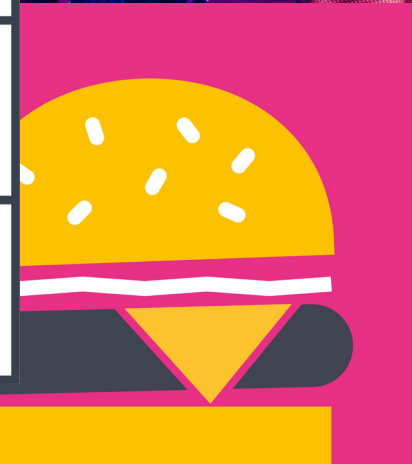




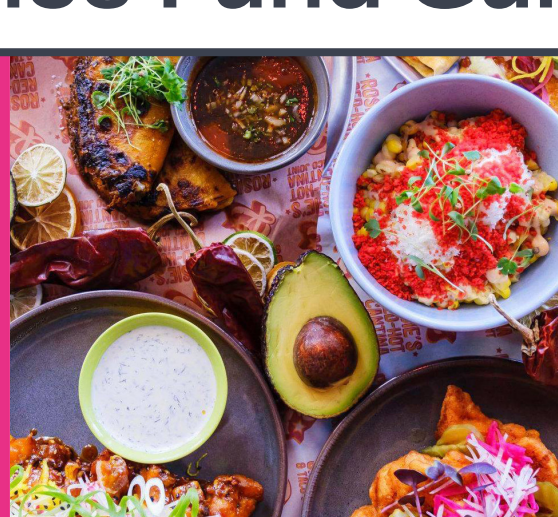
20
22



E	A	T	May 6–29	
D	R	I	N	K
WGTV	P	L	A	Y



Performance Fund Guidelines





Venue Funding Opportunity

As part of the **Eat Drink Play Festival**, Hospitality New Zealand has funding available to support venues in the presentation of entertainment and performances.

This funding is limited and will be allocated to venues whose selected performances best support the festival aims of creating vibrancy and unique occasions for customers and which bring a high level of playfulness to the festival with live music of any genre, *comedy, cabaret, theatre, circus, dance etc.*

[Apply Here!](#)

About The Fund

- The grants will generally range in value from \$200 to \$1000.
- There is only one round of funding in 2022.
- All performances that are funded must be performed during the 2022 Festival.
- Funding is limited and submitting an application does not guarantee that funding will be granted.





Eligibility Criteria



- Registered Hospitality Company.
- Must have completed an application to participate in the **Eat Drink Play Festival - Register.**
- Application must be to fund local performers.
- Performers should not be receiving other funding for the same performance concurrently.
- Agree to Festival terms and conditions as outlined in the venue info pack.
- You must submit the application by the **deadline.**



How To Apply

- READ through this GUIDE and then complete the online application form which will be available on our website.
- Ensure you have first completed an Eat Drink Play Festival participation registration.
- Email any additional support material to edps@hospitality.org.nz.
- Applications for performance funding close **Monday 28 February, 2022**.
- Application decisions announced **Tuesday 15 March 2022**.
- Successful applications are conditional on applicants completing Eat, Drink, Play Registration prior to the registration deadline **Tuesday 15 February, 2022**

Apply Here!

Assessment Criteria

Hospitality New Zealand will appoint a panel of industry representatives to assess the funding applications.

Applications will be assessed on how well your event addresses two or more of the following criteria, as nominated in your application:



An aerial photograph of Wellington, New Zealand, showing the city's harbor, surrounding hills, and dense urban development. The image is overlaid with a semi-transparent teal color.

Local

The performance or entertainment has been sourced from the local Wellington community



Innovation

The work is original, challenging or breaking new ground.



Experimentation

The work is inventive, takes risks or pushes boundaries.



Presentation

The work provides Wellington audiences with a unique presentation they wouldn't otherwise get to experience.



Content Diversity

The work will add to a broad and diverse festival programme.



COVID-19 Resilient

The event is capable of proceeding under Alert Level Two or under code Red when the COVID Traffic Light system is introduced

More Information and Support

Please always feel free to contact the *Eat, Drink, Play* event organisers during office hours with any questions prior to submitting an application.

Email edps@hospitality.org.nz
Mobile [022 092 7419](tel:0220927419)

Website participant page
www.eatdrinkplay.co.nz

Eat Drink Play 6-29 May 2022

[Apply Here!](#)

